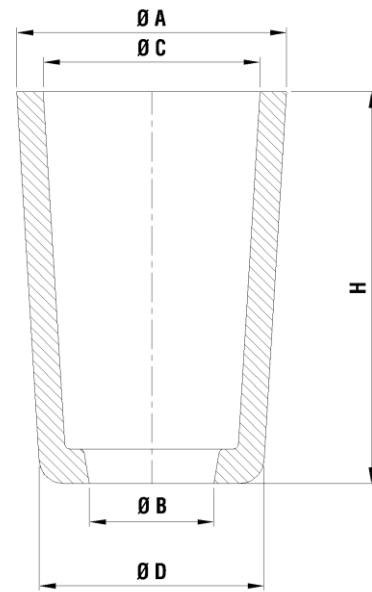
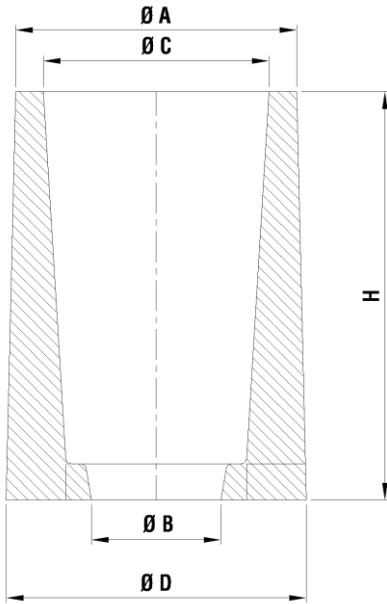


**TECHNICAL DATA**



**SUPERFEED - DP (RT)**

**SUPERFEED - DP (PT)**

SUPERFEED - DP (RT)								
SIZE	Effective Modulus (mm)	Geometric Modulus (mm)	Riser Weight (Kgs)	A	B	C	D	H
40 X 90	14.77	9.23	1.09	48	32	67	70.5	90
40 X 125	15.68	9.8	1.52	48	32	67	71.5	125
50 X 125	18.69	11.68	2.33	61	40	83	87	125
50 X 150	19.3	12.06	2.8	61	39	81	87	150
60 X 150	22.16	13.85	3.92	72	48	92	100	150
70 X 175	25.78	16.11	6.17	83	56	106	114	175
80 X 175	28.62	17.89	8	95	62	119	127	175

SUPERFEED - DP (PT)								
SIZE	Effective Modulus (mm)	Geometric Modulus (mm)	Riser Weight (Kgs)	A	B	C	D	H
40 X 90	15.58	9.74	1.135	54.2	32	73.2	62.8	90
40 X 125	17.18	10.74	1.764	58.5	32	77.5	62.8	125
50 X 125	20.02	12.51	2.6	69.3	40	89.3	75	125
50 X 150	21.12	13.2	3.303	72.3	39	92.4	75	150
60 X 150	23.33	14.58	4.222	80.6	48	100.6	83.2	150
70 X 170	27.12	16.95	6.555	94	54	117	97.4	170
80 X 175	29.86	18.66	8.491	104.6	62	128.6	108.4	175
90 X 200	33.65	21.03	12.214	117.5	68	143.6	120.5	200

FILTER SIZE in mm (Dia x Thickness)	CAPACITY (Kg)	FLOW RATE (Kg/s)	CAPACITY (Kg)	FLOW RATE (Kg/s)	CAPACITY (Kg)	FLOW RATE (Kg/s)
	SG IRON			GREY IRON		
	10 PPI		10 PPI		20 PPI	
40 X 22	20.0	2	45.0	3	35.0	2
50 X 22	35.0	3	75.0	4.05	60.0	4
60 X 22	50.0	4.02	110.0	6.05	82.0	5
70 X 22	75.0	5.05	160.0	8.08	110.0	7
80 X 22	100.0	7.02	200.0	11	160.0	8
90 X 22	120.0	9	265.0	14	205.0	10

- Notes :**
- Dimensions given above are normal. Minor variation possible due to manufacture process.
  - Bottom surface of the feeder sleeve is considered as cooling surface.